

Name :

Teacher :

General Official Homework 3

Created by Mr Lafferty
St. Ninian's High School

This homework covers topics

Score

Basic Number Operations

Algebraic Brackets

20

Simple Percentage & Money

Area

Negative Numbers

Pythagoras Theorem

Teacher Comments :

Pupil's Comment :

1. Carry out the following instructions. (NON - CALCULATOR QUESTION)

(a) $902.5 - 528.2$

Working :

(b) 30.9×70

Working :

(c) $427.5 \div 5$

Working :

(d) 25 % of 50

Working :

(5 marks)

2. Caitlin travels between Glasgow and Edinburgh.

She buys a monthly TravelPass which costs £160.00

A daily return ticket would cost £14.60

Last month Caitlin made 14 return journeys.

How much did she save by buying the TravelPass ?



(3 marks)

Working :

3. What is the difference in height between Ben Nevis and the bottom of Loch Ness. (2 marks)

Ben Nevis is 1339 m above sea level

Loch Ness 227 m below sea level

Working :

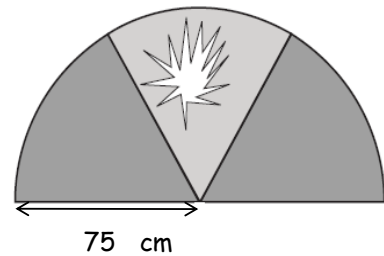
4. Simplify $-4(3y - 2)$

Working :

(3 marks)

5. A semi-circular window in the school assembly hall is made from three identical panes of glass.

During a recent storm one pane of glass was damaged.



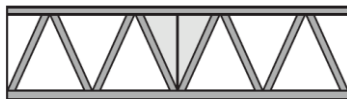
The semi-circle has a radius of 75 centimetres.

Calculate the area of the damaged pane of glass. (to 1 decimal place)

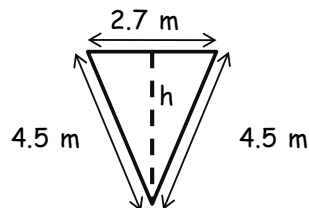
Working :

(3 marks)

6. A steel plate in the shape of an isosceles triangle is used to strengthen a bridge.



The dimensions of the isosceles triangle are shown below.



Calculate the height of the steel plate to 1 decimal place.

Working :

(4 marks)

Total marks 20